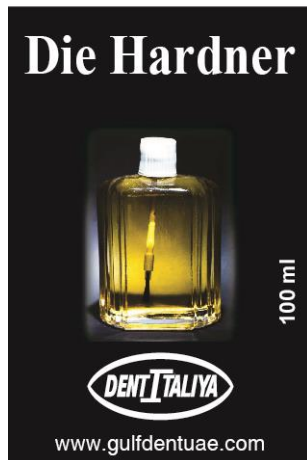


DIE HARDNER

4 x 6 cm = 200 Pcs



Die hardener applied to a stone die to seal the pores in the stone, harden the surface and protect the margin.

DIE SPACER



Die Spacer is a colored, paint-on material applied to dies that adds a desired dimension to the surface of the die to function as a "spacer." The extra thickness created by the Die Spacer results in additional space between the finished restoration and the natural tooth surface to accommodate the cement used for bonding the restoration.

WAX SEPARATOR

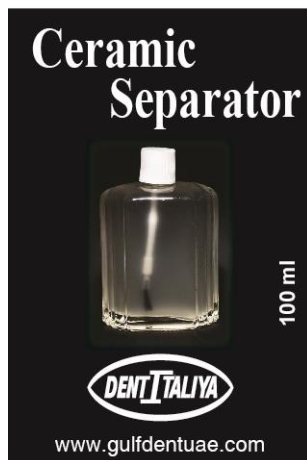
4 x 6 cm = 200 Pcs



Wax Separator (VSS) is a true separator; not an oily lubricant – a very, very key point. It is the final product that would be applied to a die prior to the formation of the wax pattern.

CERAMIC SEPARATOR

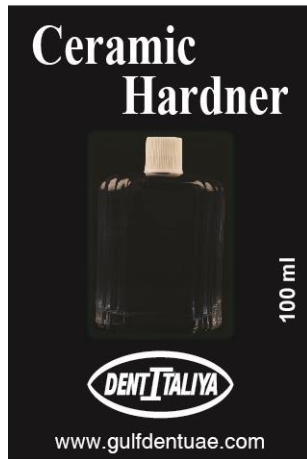
4 x 6 cm = 200 Pcs



Ceramic Separator An agent applied to a die to prevent unfired porcelain from sticking to it.

CERAMIC HARDNER

4 x 6 cm = 200 Pcs



Ceramic Hardener An agent applied to die for perfect ceramic pattern. It is a very thin agent for perfect pattern.

DEBUBBLIZER

12 x 5 cm = 100 Pcs



A wetting agent used to lower surface tension of an investment so that it will flow more easily over the wax pattern.
Comes in spray bottle.